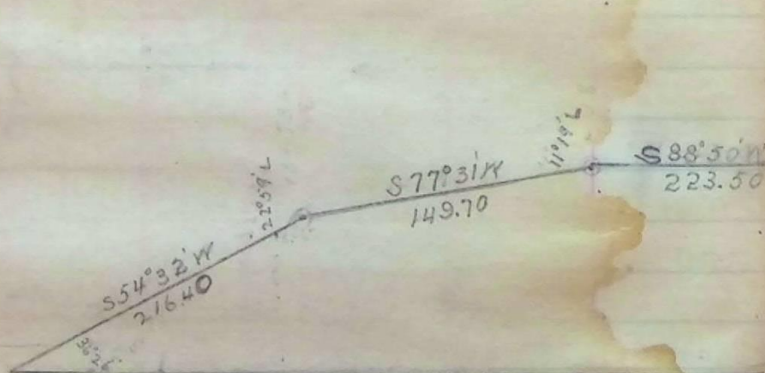


External Lines of Ogden

Ogden City Cemetery Annex
June 24th 1895

166.00
50.46
216.46



Ogden City Cemetery Annex embraces the following described land

being all of lots nine (9) & ten (10)

Block forty nine (49) and part of lot fourteen (14) Block sixty six (66) Plat C. O. C. S., and part of Ogden City Cemetery as in unoccupied street west of Madison Ave known as nineteenth (19) street.

Bounded as follows: Beginning at the S.E. corner of Block sixty two (62) Plat C. O. C. S. thence N89°02'W 869.⁰⁰/₁₀₀ ft. thence S55°19'W 110.⁰⁰/₁₀₀ ft. thence S88°50'W 223.⁵⁰/₁₀₀ ft. thence S77°31'W 149.⁷⁰/₁₀₀ ft. thence S54°32'W 216.⁴⁰/₁₀₀ ft. thence S89°02'E 1502.⁸⁰/₁₀₀ ft. to west line of Madison Ave thence N0°58'E along the west line of Madison Ave 236 ft. to place of beginning.

